



Helping Families Thrive Since 1885

2008 Annual Report

Family & Children's Service of Greater Lynn, Inc.
111 North Common Street
Lynn, MA 01902

www.fcslynn.org

Mission Statement

Family & Children's Service of Greater Lynn, Inc.
has been helping families thrive since 1885.
Our mission is to strengthen the life skills of families,
children & individuals of all ages.
This is accomplished through a range of
preventive programs offered directly or in collaboration
with other organizations in our community.

Family & Children's Service of Greater Lynn, Inc.
111 North Common Street
Lynn, MA 01902
Phone: (781)598-5517
Fax: (781)581-6614
www.fcslynn.org

F&CS is a private, non-profit 501(c) 3 organization.
Tax exempt #04-2235959

supported by



PROGRAM OVERVIEW

INCREASING OPPORTUNITIES FOR YOUTH

ASSET BUILDING GROUPS

Reduce risky behavior in youths by building resilience and strengthening positive core values

- ◆ *Mind, Body & Spirit* - asset-building group for 9-13 year old girls
- ◆ *The Right Moves* – gender specific asset-building groups, 5th grade girls & boys
- ◆ *CASASTART* with the City of Lynn Health Department, Project Cope and Communities that care – prevention program for children ages 8-11 who display risk factors; provide youth and their families with the services and support they need to grow as positive citizens.
- ◆ *PROJECT ENGAGE* - An educational program for at risk youth utilizing the *All Stars Core* curriculum with a peer mentoring component, based in Lynn middle schools.

OTHER SERVICES

FAMILY & INDIVIDUAL COUNSELING

SERVICES TO THE ELDERLY

Elder Care Management Program

EMERGENCY FINANCIAL ASSISTANCE

Funded by United Way of Mass Bay's Special Fund

COMMUNITY INVOLVEMENT

- ◆ Communities That Care Coalition
- ◆ Community Partnerships for Children Council
- ◆ Head Start Advisory and Policy Councils
- ◆ Lynn Nonprofit Business Association
- ◆ Lynn Youth Neighborhood Coalition
- ◆ Massachusetts Association of Family Service Providers
- ◆ Lead Coordinator for Shannon Grant

PROGRAM OVERVIEW

HEALTHY CHILD DEVELOPMENT

FAMILY RESOURCE CENTER (families with children from birth to 6 years)

Child development information and resource dissemination, parent child activity groups, enrichment events designed to foster healthy child development and strengthen parent-child bonds

- ◆ Family Advocates - provide outreach and staff programs
- ◆ Drop-in Play Room - open to parents and family day care providers
- ◆ Lending Library/Resource & Referral
- ◆ Monthly Family Enrichment Event
- ◆ Story Hours
- ◆ Arts and Crafts
- ◆ Workshops and Trainings on issues relating to health, safety, parenting, etc.
- ◆ Lynn Family Network - special programming for children from birth - 3 years
- ◆ Parent Child Home Program - family literacy home visiting program

Support Group for Mothers of Infants

PARENT EDUCATION AND SUPPORT GROUPS

Groups that provide information and build skills

- ◆ Parenting Education utilizing *The Incredible Years* curriculum in English and Spanish
- ◆ *Divorcing Parents* - Education about children's needs and parenting through divorce
- ◆ *JOI* - Support group for homeless teen mothers

MENTAL HEALTH CONSULTATIONS

Share expertise with preschool teachers, child-care providers and other agency's staff that supports them in providing services to children and families

- ◆ *SPIN* - Assessment and consultation to homeless shelter for teen mothers and young children.
- ◆ *Head Start* - Weekly classroom observations and recommendations for managing behaviors
- ◆ *Child Care Providers* – consultations with CPC contracted providers
- ◆ *Afterschool Programs* – weekly observations and assessment at afterschool program sites



PRESIDENT'S REPORT

On May 19, 2009, Family & Children's Service of Greater Lynn held our 124th Annual Meeting. One hundred and twenty-four years; that's a very long time. Generally speaking that's over 6 score years, over 12 decades, or about five generations of families. Any way you mark it, Lynn has seen a lot of change over those years. When you think about how fast things change, it is truly remarkable that we have been here and been vibrant that whole time.

How is it that we have had this longevity, been able to support thousands of people in Lynn and beyond, all these years? We have an outstanding staff at all levels of the Agency, and we have a committed Board. These are absolutely the bed-rock of our success.

All of us connected with the Agency exhibit our five "C"s: **Commitment, Competence, Collaboration, Continuity, and Contribution.** Each of these core competencies is important and necessary to our ability to achieve our mission.

Most importantly, it is in the **HOW** - how we bring these elements together - that we truly distinguish ourselves. It is the application of our talents, treasure, and time together that keeps us vital and relevant for Lynn. We are able to be here for our clients, for the family and children of Lynn, now and in the future because:

- We are resourceful and resilient
- We are in tune with what our community needs
- We have our endowment, and we are actively working in development both on events & grants.
- We are nimble, we have the fluidity to change as the environment changes
- We are creative in our response to community needs

These are very difficult times, for everyone. The economy is in the doldrums, and our services are needed now more than ever. No one knows what the future holds. But, thankfully, we are well positioned to weather the storm. We have a great team working on needed programs; we have Board members who care deeply about the community and this Agency. We are resourceful and resilient. Working together we will not only make it through, we will thrive.

EXECUTIVE DIRECTOR'S MESSAGE



Family & Children's Service of Greater Lynn has been helping families thrive since 1885. Our programs are wonderfully vibrant and greatly utilized, serve more than 1500 families each year in the Greater Lynn community, and engage individuals, families, children, youth, teens, and elders. Our services strengthen life skills and create **opportunity across generations:**

- Through programs that focus on early childhood development and early literacy, so that children may be better prepared to begin school;
- Through parent education and support programs that connect families to vital resources;
- Through services for at-risk youth that connect them with options to make better choices;
- Through the care and protection of elders to ensure their safety and preserve their dignity;
- Through counseling, referral, and emergency financial assistance programs that relieve crisis and provide tools for healing.

Our programs are based on a preventive, capacity building philosophy that honors and expands upon the strengths of our clients, and help ensure they have as many opportunities as possible to develop their capacity to thrive and succeed in life. On behalf of the Board and Staff at F&CS, I thank you for your interest in our empowering mission and your support of our important work.

2008 Program Highlights



In 2008, agency programs impacted over 6,000 members of the Greater Lynn community, through high quality, innovative, strength based services to children and families, through our asset-building activities and programs for youth, through our counseling and consultation services and our elderly guardianship services.



- ◆ 2161 children and parents came to the Family Resource Center
- ◆ 875 youth, age 7 to 15, participated in programs and activities increasing opportunities for youth:
 - ✦ 28 youth participated in the CASASTART program
 - ✦ 76 youth were engaged by our asset-building groups for girls
- ◆ 196 individuals received counseling from our licensed clinical social workers
- ◆ 34 elders were protected through our guardianship program
- ◆ 77 families, representing 371 individuals, received over \$52,000 in funds through the United Way Emergency Financial Assistance Program



Family & Children's Service Board of Directors

2008 Officers

Nancy Huntington Stager

President

Judith Manna Burgess

Vice President

Gordon R. Hall

Treasurer

Laurence B. Leonard, Jr.

Assistant Treasurer

2008 Board of Directors

John Bevilacqua

Valerie Buchanan

Mario Capano

Judith Carpenter

Maria Carrasco

Anne Davis

Samuel L. Davis

Kristin Dishman

Althea Flamer

Melynda Nagy Gambino

Frances H. Hall

Orfi Juhasz

Brian Magrane

Esther Mulroy

Mary Ann O'Connor

Staff

Marolí Licardié M.Ed.

Executive Director

Judith Scott Biondo, LICSW

Eduardo Brito, Case Manager

Linda Demerjian, Clinical Supervisor

Jeff Downey, Project Engage

Lucy Encarnacion, Family Advocate

Elaine Fedas, Admin. Asst/Bookkeeping

Scott Heggie, LSW

Maribell Hunter, Admin. Assistant

Kristin Klopotoski, Family Advocate

Katherine Litrocapes, LCSW

Debbie Lozzi, Fiscal Manager

Deneen Nowell, M. Ed. MFT

Jennifer O'Blenes, Case Manager

Pureza Olaya, Family Advocate

Gail Paris, LICSW

Michele Washington, Admin. Assistant

Maureen Willis, Development Director

LPS/Lynn Family Network

Francie Sudak

Jill Whelan

FINANCIAL REPORT

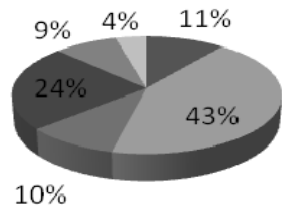
2008 Program Highlights

Summary of Operations for Fiscal Year 2008

January 1, 2008-December 31, 2008

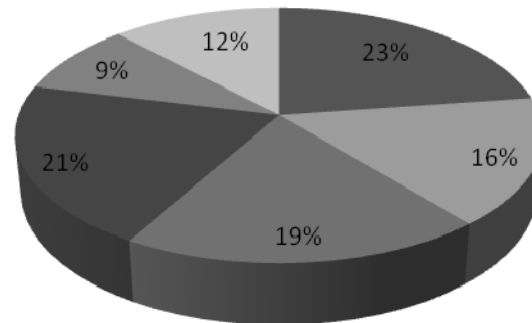
Revenues by Source \$1,271,214

- Contributions/Other Income
- Contract Revenue
- Program Revenue
- Investment Allocation
- UWMB



Expenses by Program \$1,178,918

- Early Childhood
- Youth Development
- Elder Care Management
- Family Counseling
- Fundraising /Development
- Administration



- ◆ Through funding secured through the United Way of Massachusetts Bay and Merrimack Valley's *Partnering with Families* initiative, we have introduced a new age-specific parenting education program utilizing *The Incredible Years* curriculum.
- ◆ *Project Engage* is a new program for middle school youth that connects them with high school students that serve as mentors and involves parents to foster a strong support system to reinforce curriculum based learning that encourages healthy behaviors. *Project Engage* is funded by the Executive Office of Public Safety under its Safe and Drug Free Schools initiative.
- ◆ At the request of the Executive Office of Elder Affairs, we have expanded our capacity to provide guardianship services to at-risk elders from 25 to 30.
- ◆ The number of girls served by our asset-building groups has doubled, due to the interest and support of the Lynn public schools and the expansion of the model into an after-school program setting
- ◆ F&CS now serves as the Lead Coordinator of services for youth funded under the Shannon Grant, which works to coordinate programs to curb the incidence of violence among youth populations and in the public schools.



Annual Giving

The 2008 Annual Giving Fund is comprised of unrestricted gifts made in support of agency programs.
We wish to acknowledge the generous support of the following donors:

Arrangers of Marblehead Garden Club	Alice N. Hall	Oasis Development Enterprises
Wallace Baxter	Frances H. Hall	Old Neighborhood Foods
Janet A. Blood	Gordon & Linda Hall	Donald & Sandi Peaslee
Edward J. Bohan	Elizabeth Harrigan	Robert W. Irvine & Sons, Inc.
Richard P. Breed III	Eugene & Clara Hastings	Elizabeth Davis Russell in honor of Sam Davis
Peter R. Brown	Therese Rose Holdcraft	Joseph F. Riley
Community Credit Union	Esther Howe in memory of Patricia H. Spirito	Nancy Huntington Stager
Pamela Congdon	John's Oil Company	Mr. & Mrs. John T. Sweeney
Darlene Crifo	Knights of Columbus Lynn	Dorothy Thibodeau
Mr. & Mrs. Nelson Darling	Mr. & Mrs. Laurence B. Leonard, Jr.	Suzanne Ulrich
Mr. & Mrs. Wesley H. Eaton	Paula Mackin	Unitarian Universalist Church of Greater Lynn
First Church in Swampscott Congregational	Benjamin & Barbara Mann	Unitarian Universalist Women of Greater Lynn
Althea R. Flamer	Peter & Jeannette McGinn	Joan D. Wheeler
Bette Jane Freedson	Esther Mulroy	Mr. & Mrs. Steven D. White
Give with Liberty	North Shore Heating Supply	Wood & Associates Insurance Agency

In-kind Support

We are pleased to acknowledge the following donors of goods and/or services:

Boston P.C. Networking	Karen Gibson	John O'Connor
Karina Chilel	Harbor Capital Advisors	Mike & Candi Roper
Cradles to Crayons	Stefany Hofeldt	Elizabeth Schadhauer
Michael J. DiMeglio	Intervale Technologies	Alcibene Soza
Jaime Emelian	Beverly Klopotoski	Swampscott Middle School
Beverly Eskel	Victoria Lovell	Dawn Thompson
JoAnn Fallica	Michael J. DiMeglio	Jodi Urbati
First Church in Swampscott Congregational	Betsy-Lynn & Richard Ngole	
	Eve Noss	

Foundation Support

Charitable grants in support of agency programs and operations were secured from the following foundations:

A. C. Ratschesky Foundation
Agnes Lindsay Trust
Bushrod H. Campbell & Adah F. Hall Charity Fund
Clipper Ship Foundation
Eastern Bank Charitable Foundation
Essex County Community Foundation Women's Fund
Henry A. Pevear Trust
John H. McNair Charitable Trust
Junior Aid Society
Meridian Charitable Foundation
Neal Rantoul Foundation
Rutland Corner Foundation
Tamarack Foundation
Unitarian Universalist Church of Greater Lynn; Trustees of the Spinney & Mudge Funds
United Fund & Council of Greater Lynn
United Way of Massachusetts Bay & Merrimack Valley; Partnering with Families

Contracts

Programs and projects received funding through direct contracts with:

The City of Lynn
Department of Public Health
Executive Office of Elder Affairs
Executive Office of Public Safety